



Project: Goodwill Heights
Addendum #: 1
Date Issued: February 24, 2017

Description of Addendum & Attachments:

1. Langlas & Associates Clarifications
2. Questions to the Architect – Attached

Bid Date: March 2nd, 2017 @ 2:00 P.M.

End of Addendum #1

Langlas & Associates Clarifications

1. Site contractors to provide traffic control, signage, and lot sweeping through Walgreens and McDonald's access to Goodwill site.
2. Roofing Contractor to provide minimum 20 year warranty.
3. Electrician to provide door buzzers
4. Exterior canopy roof drains: Plumber to provide roof drain and piping from canopies to subgrade. Civil to provide subgrade to storm system.
5. For all future questions, please direct all questions through Langlas & Associates, Inc.

1. What species of wood doors are being used on this project, are they red oak, white birch, natural birch, white maple or other?

White Maple

2. What finish are we supposed to quote on the wood doors? Should we quote unfinished raw wood to be finished by the general or standard stain finish by the factory?

Unfinished Raw Wood

3. Should we quote plain sliced or rotary cut wood doors?

Plain Sliced

4. What exit trim should be installed opposite of the panic devices on the doors 101-1 and 101-2? These are exterior doors with panic devices on the inside of the building. Should there be a keyed access lever on the outside of the building or should they be rigid like door 117-1?

No keyed access. Provide a dummy lever.

5. Please provide a spec or more information in the concrete finishes, PC and SC.

For the Retail area (sales floor, fitting rooms, hallway): Polished light grind with a clear Topical Sealer. Class B aggregate exposure (1-16"). No Stain.

For the warehouse/production area: sealed with a clear topical sealer. Smooth finish.

Spec sheets for the sealer and the fill product for cracks and expansion joints that we've used for other stores attached.

6. The drawings don't call out anything specific for the membrane roof. Please provide more information.

60 mil white TPO installed per manufacturer recommended details.

7. Please provide locations for tile T1 and T2.

**What we would like is Surface Art, Grasscloth II, Urban Linear Effect, Smoke.
Laticrete – 24 Natural Grey Grout**

The 4'-9" wainscot will be made up of the following sizes from top to bottom:

3"x24" bullnose top

6" stripe of vertical 1"x6" mosaic (comes in a 12"x12" mesh sheet that can be cut easily)

48" of horizontal, brick course 12"x24" tile

Schluter metal Dilex – AHKA100ACGB, brushed chrome



8. Please see the attached **Type V1 – Vanity Fixture** spec for the vanity light in the restrooms.
9. Please see the attached **MSK-1** drawing regarding an added vent through the roof above the bathrooms.
10. Prior approvals for Plumbing fixtures:

<u>Item</u>	<u>Manufacturer</u>
P3 Faucet	Elkay
P4A Sink	Mustee
P4A Faucet	Elkay

11. Steel stud framing at CMU walls, should this be 6" or 3-5/8"? It is noted both ways.

A 6" space for insulation is needed. You have the option to clip the 3.625 studs away from the wall to accomplish this.

12. Exterior Elevations, what is MS2?

MS-2 is for the Donation Canopy metal siding. It is supposed to be the same profile as MS-1, just a different color. MS-1 (siding around entry that is currently labeled MS on the drawings) is White Platte River Panel. MS-2 should be at the Donation Center wall and Awning and is Platte River Panel in Dark Grey.

13. Donation Canopy M1. Is this the same product as MS?

Should be labeled MS-2

14. Division 10 items: The plans call for contractor to only supply grab bars and mirrors. Will Goodwill supply everything else?

Yes

15. The MEP plans show an extra room (room 114), but the architectural plans don't show it. Please advise.

The new purchases room 114 should be deleted from the MEP sheets.

16. What size and spacing for rebar in slab?

#4 rebar @ 24" OC each way to hold concrete shrinkage cracks tight. Concrete controls joints to be place in the slab approximately 15' O.C. E.W.

GLOSS “WET-LOOK” SEALER – 600 VOC

SuperSeal™ 2000 is an acrylic-based, crystal-clear sealer. Formulated and recommended for application to a porous substrate for the primary purpose of preventing the penetration of water.

Features – Non-Yellowing, Crystal Clear – Dries to a Gloss “Wet Look” Finish – Interior/Exterior Use – Enhances Color

DESCRIPTION

SuperSeal™ 2000 is a premium-quality, non-yellowing, UV-resistant, super-tough acrylic film that is easy to clean and maintain. SuperSeal™ 2000 is formulated and

recommended for application to a porous substrate for the primary purpose of preventing the penetration of water.

USES

SuperSeal™ 2000 can be used on interior or exterior masonry, and concrete-type surfaces. SuperSeal™ 2000 can be used as a base-coat for interior applications where a compatible, commercial floor wax is planned as part of a maintenance program. Use on colored or uncolored, stamped or exposed aggregate concrete, porous brick, natural and manufactured stone, stucco, slate, unglazed tile and flagstone.

TECHNICAL DATA

MOISTURE RETENTION, TEST ASTM C309

Super Seal 2000 (at 200 ft ² per gallon), kg/m ²	0.21
Test requirement, not to exceed, kg/m ²	0.55

MOISTURE RETENTION, TEST ASTM C309

SuperSeal™ 2000 (at 300 ft ² per gallon), kg/m ²	0.32
Test requirement, not to exceed, kg/m ²	> 0.4

GASOLINE RESISTANCE

15-minute exposure (ponding)	Slight dulling
------------------------------	----------------

Tg°C

	50
--	----

TUKON HARDNESS

30 minutes at 180°F	9.3
30 minutes at 300°F	13.7

PENCIL HARDNESS

30 minutes at 180°F	F
30 minutes at 300°F	H

FLEXIBILITY, 1/8, 1/4, 1/2 INCH MANDRELS*

	6,5,4
--	-------

SPRAY CONDITIONS

Viscosity, No. 2 Zahn cup, sec.	19
---------------------------------	----

ABRASION RESISTANCE

(mg lost, CS-17 wheel, 1000 g load, 1000 cycles)	160
--	-----

*The degree of cracking at the bend over each mandrel is rated on a 0 (no failure) to 10 (complete flaking) scale.

PACKAGING

SuperSeal™ 2000 is available in one-gallon (3.8 L) and five-gallon (18.925 L) containers and fifty-five gallon (208.175 L) drums.



COVERAGE

SuperSeal™ 2000 will cover approximately 150 to 200 square feet per gallon depending upon porosity of the surface.

STORAGE

Store in a safe place. Keep containers tightly sealed. DO NOT allow product to freeze. Material that is frozen CANNOT be used when thawed. Shelf life is approximately 12 months.

CAUTIONS

Contains aromatic hydrocarbons. KEEP OUT OF REACH OF CHILDREN. Before using or handling, read the Material Safety Data Sheet and Warranty. DO NOT TAKE INTERNALLY. Do not breathe vapors or mist. Use only with adequate ventilation and use a respirator when levels are above applicable limits. Avoid contact with skin and eyes. Close container after each use. Use good hygiene when handling this product and wash and bathe after each use. Be sure to wash clothing after each use.

WARNING

IT IS ILLEGAL TO USE THIS PRODUCT IN THE STATE OF CALIFORNIA. OTHER STATES MAY ALSO HAVE SIMILAR RESTRICTIONS. CHECK WITH YOUR LOCAL REGULATORY AGENCY. NOT RECOMMENDED for dense surfaces. Apply in thin coats, only on surfaces textured for slip resistance. If applied too heavily or applied to dense surfaces, the sealer may become slippery, especially in areas where water accumulates. If in doubt, test the surface by sprinkling with water. If water beads up on the surface, additional cleaning and testing must be done. Do not use where hydrostatic pressure is possible.

PREPARATION OF CONCRETE

Concrete Coatings, Inc. strongly recommends representative jobsite samples. Individuals who will be performing the work should test different sections of the concrete to determine suitability, coverage, and final appearance. New concrete should be cured at least 28 days, prior to application. The application area must be completely clean and dry to the touch. Pressure washing and power scrubbing may be necessary. Remove all efflorescence, oil, dirt, wax, old paints, sealer, and curing compounds. RINSE THOROUGHLY. Allow the surface to dry at least 24 hours.

Soaps and detergents should never be used for cleaning. Dried residue on the surface will prevent the sealer from bonding. Acid washing is NOT recommended. If acid is used, a representative area must be tested. Soak the entire surface with water before applying the acid mixture. When the fizzing stops, rinse with clean water. After 10 or 15 minutes, the surface must then be flushed with clean water and neutralized with a pH neutralizer such as ammonia, baking soda, or T.S.P. Repeat rinsing and neutralizing. Acid residue will prevent the sealer from penetrating. Allow the surface to dry for at least 24 hours prior to application. NOT RECOMMENDED for pre-sealed or dense surfaces, such as glazed tile, marble or granite, dense brick, dense slate, or terrazzo. If in doubt, test the surface by sprinkling with water. If water beads up on the surface, additional cleaning and testing must be done. Do not use where hydrostatic pressure is possible.

APPLICATION

Always test a small area of surface to verify protection and appearance. Use SuperSeal™ 2000 full strength. Thinning is not required. Apply 1-2 light, even coats (depending on porosity of surface) with a short-napped roller or a sprayer with neoprene seals and hose. Allow 1-3 hours between coats or until the surface is dry to the touch. Apply in temperatures between 12.8°C to 26.7°C (55°F and 80°F). Avoid using in direct sunlight, especially on hot, windy days. Apply during the cooler part of the day when the surface is shaded. Do not apply on rainy or foggy days. Excess moisture will not allow the sealer to dry properly. Use only in well ventilated areas. It is recommended that foot traffic remain off the finished sealed surface for 24 hours. For heavy traffic, allow 72 hours for curing. HELPFUL HINT: Use xylene for easy cleanup immediately after use.

MAINTENANCE

The sealed surface should be inspected periodically for areas of thin or traffic-worn sealer and reapplied as needed. If traces of efflorescence are present, it should first be eliminated with a gentle cleaner. For maximum life expectancy, routinely sweep and wash floors with appropriate cleaners and detergents. All chemicals or abrasive grit should be removed as soon as possible.



WARRANTY

This product is not intended for public use and is intended for use by licensed contractors and installers, experienced and trained in the use of these products. It is warranted to be of uniform quality, within manufacturing tolerances. The manufacturer has no control over the use of this product, therefore, no warranty, expressed or implied, is or can be

made either as to the effects or results of such use. In any case, the manufacturer's obligations shall be limited to refunding the purchase price or replacing material proven defective. The end user shall be responsible for determining product's suitability and assumes all risks and liability.

PLAN SPECIFICATION

SuperSeal™ 2000 Suggested Short Form Specification:

All concrete flatwork designated as being sealed in the plans and specifications shall be sealed with 1-2 light even coats of SuperSeal™ 2000, at the rate of approximately 250 to 300 square feet per gallon (6.13 – 7.36 m²/L), manufactured by CCI 800-443-2871, Layton, UT. SuperSeal™ 2000 shall be applied in accordance with the SuperSeal™ 2000 Technical Information Sheet.

ORDER SPECIFICATION

Product: SuperSeal™ 2000		
Shipping Weight: 8 lbs (3.63 kg)	Container Size: 1-Gallon (3.79 L)	Item No: S-2000-1
Shipping Weight: 40 lbs (18 kg)	Container Size: 5-Gallon (18.925 L)	Item No: S-2000-5
Shipping Weight: 450 lbs (202.5 kg)	Container Size: 55-Gallon (208.175 L)	Item No: S-2000-55

"Concrete Coatings Inc. warrants its products to be free of manufacturing defects and that they will meet Concrete Coatings Inc. current published physical properties when applied in accordance with Concrete Coatings Inc. written directions and tested in accordance with ACI, ASTM and Concrete Coatings Inc. Standards. There are no other warranties by Concrete Coatings Inc. of any nature whatsoever, expressed or implied, including any warranty of merchantability or fitness for a particular purpose in connection with this product. Concrete Coatings Inc. shall not be liable for damages of any sort, including remote or consequential damages, resulting from any claimed breach of any warranty, whether expressed or implied, from any other cause whatsoever. Concrete Coatings Inc. will not be responsible for use of this product in a manner to infringe on any patent held by others. User assumes all liability and risk associated with use, selection, application and warranty of product. Concrete Coatings Inc. makes no representation as to the suitability of product for any application and/or damages of any kind directly or indirectly associated with its selection or application."

FOR THE LOCATION OF YOUR NEAREST CONCRETE COATINGS INC. REPRESENTATIVE CALL NATIONWIDE TOLL-FREE 1-800-443-2871

1. Product Name

SPAL-PRO RS 88

2. Manufacturer

METZGER/MCGUIRE

PO Box 2217 Concord, NH 03302 (USA) Phone: 603-224-6122
 Fax: 603-224-6020 Web: www.metzgermcguire.com

3. Product Description

Composition

Spal-Pro RS 88 is a rapid setting polyurea polymer liquid of 100% solids content. When cured, **Spal-Pro RS 88** is a gray, rubberlike solid with a hardness of Shore A86-90.

Basic Use

Spal-Pro RS 88 was developed to fill and protect joints in trafficked industrial and retail concrete floors. Its primary function is to support such traffic and protect joint edges.

Spal-Pro RS 88 is intended for use where final temperatures are from 32°F (0°C) to +120°F (49°C).

Other Uses

Spal-Pro RS 88 is also ideal for filling random cracks in industrial floors.

4. Limitations

Spal-Pro RS 88 is not recommended for use under VCT or other non-breathing flooring systems.

Spal-Pro RS 88 is designed for interior use and may not be suitable for outdoor applications due to thermal movement.

Spal-Pro RS 88 may exhibit bubbling and/or compromised adhesion if concrete or ambient moisture levels are excessive.

5. Advantages

Spal-Pro RS 88 is Rated "Heavy-Duty"

Unlike softer polyureas, **Spal-Pro RS 88's** higher shore hardness provides greater edge protection and support.

Spal-Pro RS 88 is "Rapid-Setting"

At 70°F (21°C) it can be opened to full traffic in as little as (60) minutes and light traffic in (30) minutes.

Spal-Pro RS 88 is Colorfast

Spal-Pro RS 88 maintains a consistent color profile and resists fading and other discoloration under normal conditions.

Spal-Pro RS 88 is Non-Staining

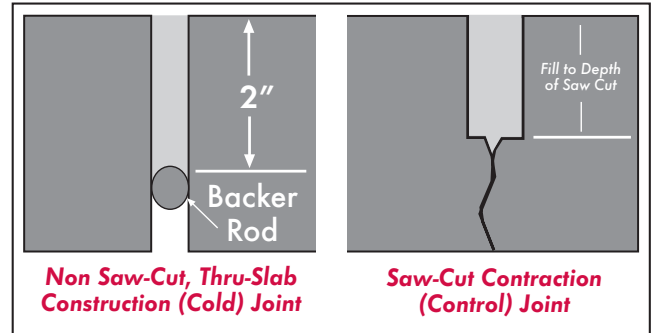
In normal slab surface conditions, **Spal-Pro RS 88** does not exhibit residual concrete staining often associated with semi-rigid fillers.

Spal-Pro RS 88 is Ideal for Use in Stained/Polished Floors

Spal-Pro RS 88 can be used to fill joints and cracks in polished concrete floors, and will not smudge or smear during grinding/polishing.

6. Correct Joint Design/Installation

Spal-Pro RS 88 should be installed full joint depth in saw-cut contraction/control joints (or 2" minimum in saw-cut joints exceeding 2" in depth) per PCA and ACI guidelines.



In construction (formed) joints that are not saw-cut, **Spal-Pro RS 88** should be installed at a minimum 2" depth. **DO NOT USE COMPRESSIBLE BACKER ROD IN STANDARD SAW CUT CONTRACTION/CONTROL JOINTS!** Rod may be used 2" down in construction joints or saw cut joints exceeding 2" in depth ONLY.

7. Color, Packaging and Accessories

Standard color is Standard Gray, multiple ColorFast and custom colors are also available. Available in 10 gallon (US) kits (2-5 gallon US pails) and 600 ml (300:300) dual-cartridge convenience kits. **Optional FAST PACK** is available to accelerate initial gel/cure time.

8. Applicable Specifications

There are no government or ASTM standards for industrial floor joint fillers. **Spal-Pro RS 88** meets or exceeds the floor joint filler guidelines set forth by the American Concrete Institute (302.1 R-04 Guide for Concrete Floor and Slab Construction), ACI 360 and Portland Cement Assoc. (Concrete Floors on Ground, Fourth Edition 2008).

9. USDA/FDA/CFIA/LEED® Approval

Spal-Pro RS 88 is acceptable for use in USDA, FDA, and CFIA regulated facilities. **Spal-Pro RS 88** contains no VOC's and is fully compliant with USGBC LEED® green building standards.

10. TECHNICAL PROPERTIES

TEST	METHOD	RESULTS
HARDNESS, SHORE "A" @ 70°F	D-2240	A86-90
TENSILE STRENGTH	D-638	970 PSI
TENSILE ELONGATION* (@ 70°F)	D-638	180%
ADHESION TO CONCRETE	D-4541	350-400 PSI
TACK FREE @ 70°F	-	5 Minutes
TRAFFIC READY @ 70° F	-	1 Hour
MIX RATIO (by vol.)	-	1:1
SOLIDS CONTENT	-	100%
SHRINKAGE	-	Negligible

* This property provided only for comparison with other polyureas. Elongation is not an indication of expansion capability.

11. Technical Assistance

Complete technical support and literature are available from authorized distributors, through our web site (www.metzgermcguire.com) or by contacting our New Hampshire headquarters at (800) 223-MM80.

12. Where to Specify and File

Spal-Pro RS 88 is exclusively for use in concrete floors and thus should always be referenced in 03251 (expansion/contraction joints) & 03300 (cast-in-place concrete). It is not a sealant and should not be specified as part of 07900, other than for cross reference.

13. Quality Installation Programs

Metzger/McGuire offers quality installation assurance programs for qualified projects. Contact Metzger/McGuire for specific information.

14. Availability

Spal-Pro RS 88 is available through quality construction supply distributors (listing at www.metzgermcguire.com) or through our NH headquarters.

15. Installation

The following instructions are **ABBREVIATED**. Complete instructions are provided with each shipment.

When to Install - The installation of **Spal-Pro RS 88** should be deferred as long as possible after slab placement, and should not be installed prior to 30 days to ensure adequate adhesion. ACI recommends a slab cure of 60-90 days or longer, to permit for greater concrete shrinkage/joint opening, lessening the expected incidence of joint filler separation. Ambient areas should be stabilized at final operating temperature prior to installation, refrigerated/frozen goods areas stabilized and held for an additional 7-14 days or longer, if possible. Refer to **Technical Bulletins T5 (Filler Installation Timing)** and **T6 (Filler Timing for Refrigerated Buildings)** for additional information.

Joint Preparation - Joints should be completely free of saw laitance, dirt, debris, coatings/sealers and frost or visible moisture. Joint cleaning procedures must accomplish the removal of all of the above. Failure to do so will compromise adhesion. Simply "raking" debris out of joint is not an acceptable cleaning method. Preferred methods of joint cleaning include using a dustless concrete saw with diamond blade (ensure blade is slightly wider than joint or clean both sides) or sandblasting. No primer is needed. If unusual conditions are present, contact Metzger/McGuire.

Choking off the base of the joint is normally not required due to **Spal-Pro RS 88's** rapid set. **Do not use compressible backer rod (Ethfoam, etc) in saw cut joints less than 2" deep.**

Prior to Dispensing - Thoroughly read SDS and complete installation instructions prior to opening containers or attempting to dispense.

Spal-Pro RS 88 must be dispensed with dual-feed power dispensing equipment, or with pre-filled, dual-dispense cartridge kits. Manual dispensing is impractical due to short working life (1-2 minute gel time). Power dispensing systems should be set to a 1:1 ratio by volume. If installing in cooler temperatures, material should be maintained at a minimum temperature of 75°F (24°C) for best results. We recommend the use of a 1/2" diameter (ID) static mixer with 30 or 32 elements for material dispensing and proper mix. We strongly recommend performing periodic ratio checks on power dispense units to ensure proper cure.

Material provided in pails should be thoroughly mixed to redistribute any settlement that may have occurred during shipping or storage. Cartridges should be shaken aggressively to accomplish same.

Pump tanks, lines and dispensing manifold should be clean and free of any residual materials remaining from previous filler installations.

15. Installation (continued)**Dispensing**

Joints can be filled in one or two passes, depending upon joint depth and dispensing tip used. Preferred method is to fill from bottom to top using a dispensing tip that fits into the joint. Take care not to entrap air bubbles. Slightly overfill the joint, leaving a crowned profile, and allow to cure.

Finishing

The crown may be easily razored off as early as 15 minutes after placement, depending upon temperature. We recommend testing various shave times to find the optimal shave, which results in a filler profile that is flush with the floor's surface and free of any film from material overflow. If shave time is substantially delayed or if temperatures are low, **RS 88** shaving process may be more labored. Should filler cure below the floor surface (due to settlement into the void at base of joint, etc.), remove top 1/2" of filler and re-apply **RS 88**. Grinding/polishing operations should be deferred for one hour or more after placement. If using **FAST PACK** addition, 25-30 minutes or more.

Clean-Up

Spills of unmixed components can be cleaned up with solvent (MEK, denatured alcohol, etc) or scraped/shaved off floor and tools if cured.

16. Maintenance

Once cured, **Spal-Pro RS 88** is basically maintenance free. If joints should open after installation, fill voids with additional **Spal-Pro RS 88**. Refer to **Technical Bulletin T11 (Joint Filler Separation; Causes & Corrections)** for additional information.

17. Approximate Coverage Chart

Joint Size (US)	LF/Gal.	Joint Size (Metric)	M/Gal
1/8" x 1 1/2"	100	3 x 38	30
1/8" x 1 3/4"	85	3 x 44	26
1/8" x 2"	75	3 x 50	23
3/16" x 3/4"	135	5 x 19	41
3/16" x 1"	100	5 x 25	30
3/16" x 1 1/4"	85	5 x 31	26
3/16" x 1 1/2"	70	5 x 38	21
3/16" x 1 3/4"	60	5 x 44	18
3/16" x 2"	50	5 x 50	15
1/4" x 1"	80	6 x 25	24
1/4" x 1 1/4"	60	6 x 31	18
1/4" x 1 1/2"	50	6 x 44	14
1/4" x 1 3/4"	45	6 x 50	12
1/4" x 2"	40	9 x 25	15

18. Safety

This product is for industrial use only. Use only in well ventilated areas. Practice all normal jobsite safety precautions (clear work area, etc). Refer to SDS and installation instructions for more information.

19. Food Related Facilities

Spal-Pro RS 88 is acceptable for use in facilities regulated by USDA/FDA/CFIA. Contact us to discuss project details if contamination is a concern.

20. Material Warranty

WARRANTY: Metzger/McGuire Co. solely and expressly warrants that its Spal-Pro RS 88 shall be free from defects in material and workmanship for 365 days from the date of purchase. Unless authorized in writing by an officer of Metzger/McGuire, no other representations or statements made by Metzger/McGuire or its representatives, in writing or orally, shall alter this warranty. Metzger/McGuire makes no warranties, implied or otherwise, as to the merchantability or fitness for ordinary or particular purposes of its products and excludes the same. If any Metzger/McGuire product fails to conform with this warrant, Metzger/McGuire will replace the product at no cost to the purchaser. Purchaser's sole remedy in any case shall be limited to the purchase price or replacement cost of product and specifically excludes labor and the cost of labor, lost wages and opportunity costs, and all other possible incidental, consequential or special damages resulting from any claim of breach of warranty, breach of contract, negligence or any legal theory. Any warranty claim must be made within one (1) year from the date of material purchase. Metzger/McGuire does not authorize anyone on its behalf to make any written or oral statements which in any way alter the installation procedures or written installation instructions published in its product literature or on its packaging labels. Any installation of Metzger/McGuire products which fails to conform with such installation information or instructions shall void this warranty. Purchaser shall be solely responsible for determining the suitability of Metzger/McGuire's products for the purchaser's intended purpose.

REVISED 09/15

CHORD 7442

SKU 1330002



PRODUCT SPECIFICATION

GENERAL

FINISH:	White	GROSS WEIGHT:	4.20 (lbs)
MAIN MATERIAL:	Metal - Mild Steel	CLASS:	cETLus (Class I)
DIMENSIONS:	H: 65mm W: 640mm D: 65mm H: 2.56" W: 25.20" D: 2.56"	LISTING LOCATION:	Damp
INSTALLATION ORIENTATION:	Wall Mount - Vertical, Horizontal	FITTING METHOD:	1/2" Stub Mount 4" Octagon Box with included canopy kit
CUT OUT HOLE:	Not Applicable	ADA COMPLIANT:	Yes
RECESS DEPTH:	Not Applicable	IC RATING:	Not Applicable
FIRE RATING:	Not Applicable	VOLTAGE:	Mains 120 (V)
CABLE LENGTH:	Not Applicable		

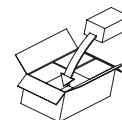
LAMP

LIGHT SOURCE:	Mid Power LED	MACADAM ELIPSE:	3-Step
MAXIMUM WATTAGE:	2 x 3.2W	UGR:	Not Applicable
MAXIMUM LAMP LENGTH:	Not Applicable	BEAM ANGLE:	Not Applicable
LAMP INCLUDED?	Yes (Integral)	TILT ADJUSTMENT ANGLE:	Not Applicable
DELIVERED LUMENS:	294.4 (lm)	ROTATION ADJUSTMENT ANGLE:	Not Applicable
COLOR TEMP:	3000 (K)	AVERAGE LIFESPAN:	60,000 (Hrs)
CRI:	80	L70:	To Be Advised
R9:	To Be Advised		

ELECTRICAL

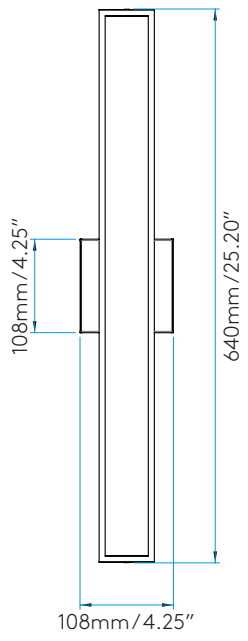
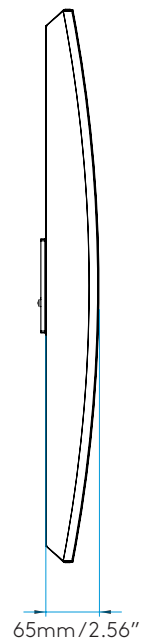
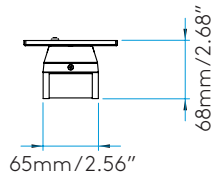
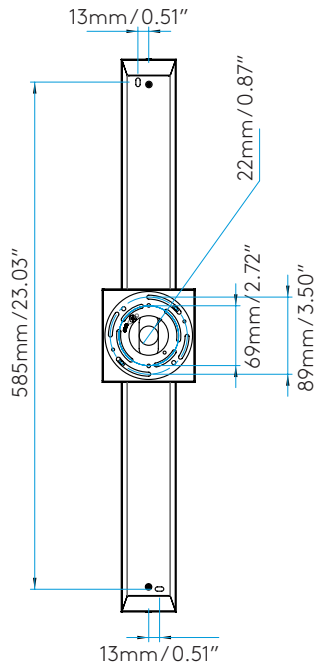
SWITCHED:	No	SUPPLY FREQUENCY:	50/60 (Hz)
DIMMABLE:	No	DRIVER / BALLAST VOLTAGE:	100-240 (V)
DIMMING METHOD:	Not Applicable	DRIVER AVERAGE LIFESPAN:	60,000 (Hrs)
DRIVER OUTPUT CURRENT:	350 (mA)	EFFICACY:	To Be Advised
DRIVER OUTPUT VOLTAGE:	Not Applicable	DRIVER / BALLAST INCLUDED?	Yes (Integral)

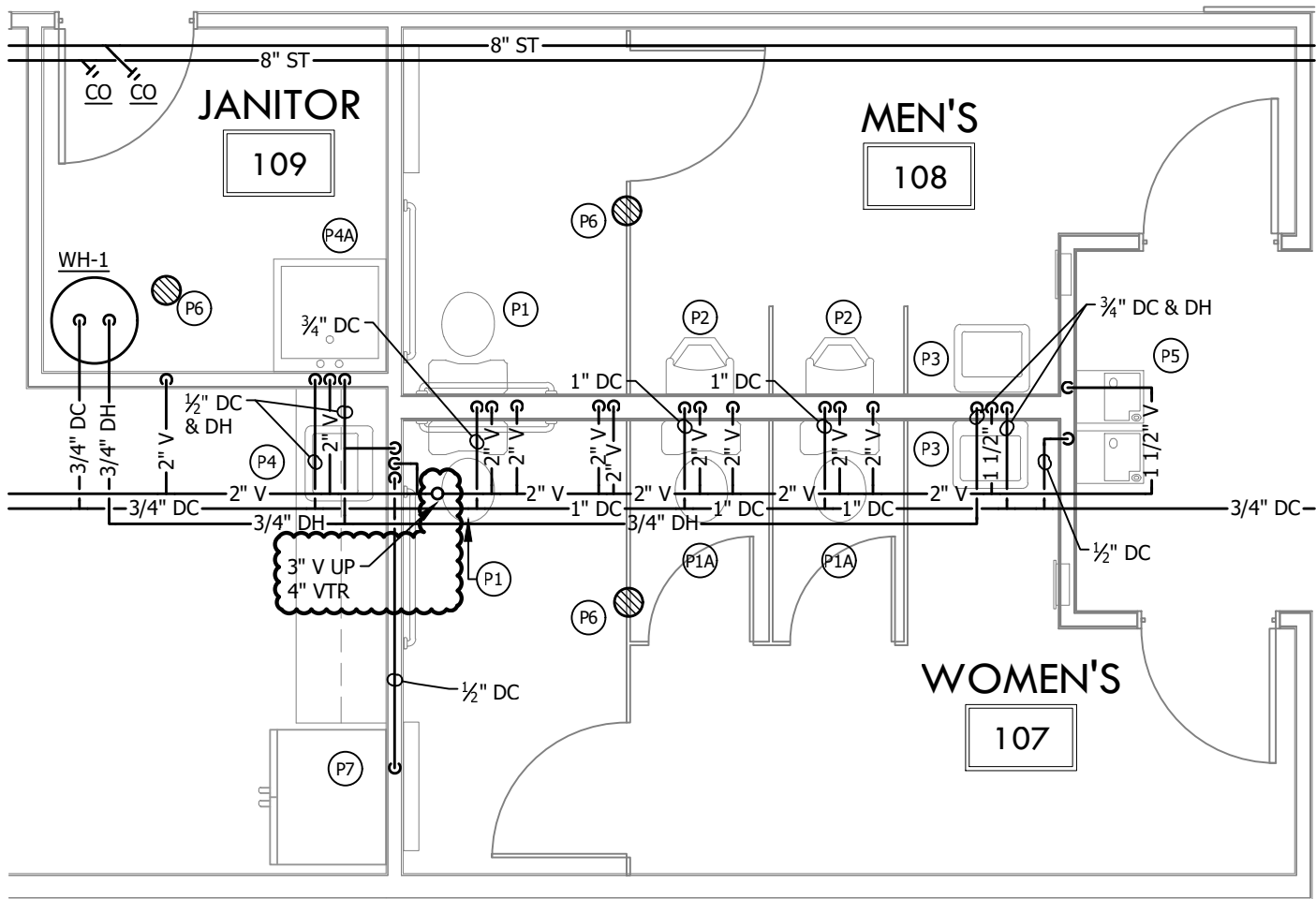
ADDITIONAL INFORMATION



BOX QUANTITY X6

PRODUCT ELEVATIONS





CHANGES TO SHEET M3.2

**GOODWILL
HEIGHTS
BILLINGS, MT**

**BY:
DMR**

**DATE:
02-22-17**

#16085

MSK-1



MECHANICAL / ELECTRICAL
PROFESSIONAL ENGINEERS

1629 AVE D STE 7C, BILLINGS MT 59102
PHONE: 406.252.3237 FAX: 406.252.3276

www.coneer.com